

#6
Folder 30

O. E. S. GRAND
CHAPTER LIBRARY

FENCED IN BY LOVE
(A ceremony honoring the Past Matrons and Past Patrons.)
by

6--2

Katharine Curzon Lowman, P. M.

This may be given after the regular meeting of the chapter or under the order of business "The Good of the Order". You may lightly chalk a large square on the floor in the center of the room. It should be large enough to include the Star Points, and should be drawn outside those stations.

The W. M. and W. P. are in their stations when the ceremony opens.

The WORTHY MATRON arises to say:

Sisters and brothers, we have with us this evening Past Matrons and Past Patrons of --- --- --- Chapter.

Because these sisters and brothers have served the chapter in its highest office, giving at all times the best they had to give; and --

Because the present officers and members very deeply appreciate all that each Past Matron and Past Patron has done for the chapter and for the good of the order -- we feel that it is fitting that we devote a short period of time to their honor.

Let's build a little fence of LOVE,
Within our hall to night;
And they shall feel content to be
Shut in by Love, so tight.

So, one by one, let each post come,
To build it strong and tall;
And we shall be content to see,
Love's fence surrounding all.

Worthy Matron is seated. She sounds gavel.

The CONDUCTRESSES arise in their stations, and the Assoc. Cond. says:

Between the stations of the Chaplain and Electa, above the fifth point of our Star, I shall plant my staff to form the first post in the fence of Love - that Love of which Electa teaches, it being the same fraternal love which the officers and members of ---- --- ---- Chapter bear toward the Past Matrons and Patrons.

Music begins.

The CONDUCTRESSES leave their stations, going to aisle, east up the aisle to corners of drawn square. They turn to face each other and come together walking on east side of the chalked square and stopping at the position for beginning of the march at the end. (See diagram on last page.)

Copyright by Lowmans, Inc. Reprint MCMXLIX. All rights reserved.
This may not be printed in part or whole without our expressed permission.

They ground staffs and stand facing each other while the A. C. speaks:

As an expression of love, and as a support in our Fence of Love, I ground my staff on this spot in honor of the Past Officers of this chapter.

The CONDUCTRESS speaks:

Long years ago a father's tears
Fell noiseless on his hand;
He wept for her -- his only child,
We know -- you understand.

But on this spot, near Adah's chair,
We'll shed no tears to-night;
Because their Past Fidelity
Has made our Star shine bright.

So here I ground my staff to say,
We'll love them to the last --
These Matrons, Patrons, of the East,
Who served us in the past. (Grounds staff.)

The Conductresses face east, simultaneously, and remain standing.

The Associate Matron and Associate Patron will then arise in the west. If you do not have the office of Associate Patron in your chapter, use a member with the Associate Matron.

The ASSOCIATE MATRON says:

Because the rays of light from the effulgent sun unite in the west with the rays of Light and Joy from the third point of our Central Star; and-

Because the examples left for us by our Past Matrons and Patrons have been a bright and shining light upon our pathway, I wish to become a part of the fence on the west.

They proceed east to west line of square and go to positions; the Associate Matron going to the South-west corner and the Associate Patron to the North-west corner. They face the East, and the Associate Matron finishes her speech.

May the united rays of light at this corner fall in gentle benediction upon the Past Officers of ---- Chapter and bring them light in times of darkness; help in time of trouble; and strength in time of sorrow.

ASSOC; PATRON standing on the North-west corner of the square will say:

Here in the west, when Life's Day is fading into twilight, HOPE mingles with the mellow rays of light from the setting sun and brings FAITH and COURAGE. May the resultant light fall caressingly upon the up-turned faces of our Past Officers and gently erase all signs of worry and sadness. May it cause them to be always radiant with the Light of COURAGE, JOY, and PEACE.

Because I cherish this wish in my consciousness, and in order that it may become a part, or post, in our Fence of Love, I take my position at this corner.

The MARSHAL then arises in the east and says:

At all four corners of the earth
Where God is loved 'til death -- from birth;
'Tis found that honor comes to all
Who answer, "Here", to duty's call.

Marshal goes to take her place in the fence, or on the square. (Shown by diagram on last page.)

CHAPLAIN arises and says:

Dear Father, thou who loveth all,
And hearest every earnest call,
Be with our dear ones ev'ry day,
To keep them in the narrow way.

Takes her place on east side of the square and faces east.

ELECTA then says:

'Tis Love that marks the sparrow's fall,
And hears the hungry nestling's call;
So may Love guide their steps aright
And give them light in darkest night.

Takes her place in the fence.

The TREASURER then says:

Not gold alone, nor silver, nor valuable jewels are precious; for far more precious are these: the tender smile of a loved one; the warm hand clasp of a true friend; and the confidence which has reason for existing and which cannot be shaken.

May the Great Giver of all good make these Past Officers rich with an abundance of these priceless treasures.

Takes place on the square.

ADAH will then say:

As clear blue skies in sunny May,
When all dark clouds are blown away,
May all the days that come to you
Be cheerful, sunny, bright as dew. (Takes her place.)

RUTH then says: (She may take her place first and say this afterwards, as also may the others.)

Entreat us not to leave thee, nor to return from following after thee, O Past Officers of ---- Chapter; for we do not wish to leave those whom we love; neither do we wish to cease striving to follow in the footsteps of those who have so ably marked out the path for us. Where thou dwellest we will dwell, for "In Him (Love) we live, and move, and have our being".

MARTHA takes her place and says:

May Love lead you into pastures green, beside still waters where all is calm and peaceful, and where the Hope and Faith of Martha shall come into your hearts, is the loving plank which Martha adds to the Fence of Love.

ESTHER then adds, and takes her place.

As Esther was true and loyal to her people, so are the members of this chapter loyal and true to their Past Officers; and so shall they ever be.

An OLD MEMBER will then say:

If you go East, North, South, or West,
You'll come home to find -- old friends are best.

Surely friendship which has lasted through the years has a place in the construction of the Fence of Love; so as its representative I take my stand at this place.

A NEW MEMBER will then say:

Because new friends, new ideas, new scenes have a place in God's plan for man, I, a new member in the Order have a place in this boundary of Love which the members of --- Chapter are building in honor of their Past Officers.

WARDER then says:

"Thou wilt keep him in perfect peace, whose mind is stayed on thee, because he trusteth in thee."

So may He keep you in peace, Past Matrons and Past Patrons of --- Chapter.

A YOUNG WOMAN, may be dressed in white, enters room through door in west. She advances up aisle to east; goes across east to stand in front of (a little to the side of) the Secretary whom she addresses.

Sister Secretary, I am ready to lay the centerpiece within the Fence of Love.

Is the manuscript of facts ready?

SECRETARY replies:

It is ready, Sister Builder. Do you wish to read it before placing it in the centerpiece?

YOUNG WOMAN, called SISTER BUILDER, replies:

In order that it may be known that all necessary facts are included in the manuscript, and that these facts are correct, you will please read.

SECRETARY then reads the following:

Whereas the following persons have served --- Chapter, of the Order of the Eastern Star serving faithfully and well, in the highest positions in that Order;

And whereas they have been good exponents of the principles of the Order, and have been deemed worthy of being honored by having their names placed within the centerpiece which is bounded by the Fence of Love.

I hereby write their names and dates of service as follows:

Give names and dates of years of service of the Past Matrons and Patrons.

After the reading of all the names and dates the W. D. arises and says:

To this list of names and dates I would add the following as being worthy of preservation:

A good deed done by each.

Kind words of greeting given by them to members.

An outstanding example of unselfishness, and

A generous sample of the good wishes from --- Chapter.

YOUNG WOMAN BUILDER says:

Sister Secretary, the facts are true and acceptable and I shall be very happy to carry them to the centerpiece, within the Fence of Love. Thank you, and farewell.

After going to the Secretary's desk to get the names, etc., the builder lights a candle, then goes between the Conductresses, through the gateway (the officers turn and face the altar as she enters) and deposits the list in front

of the bible on the altar; ~~when she goes~~ then she goes to light five colored candles which have been placed on the pedestals of the Star Points. One candle of appropriate color is on each pedestal.

Beginning at Adah's point (Lights in the chapter room are turned off as she lights the first candle) she makes the rounds lighting the candles; then leaving the labyrinth through the gateway she stands in the East, with her lighted candle, facing the altar and the officers until the march is finished.

The Star Points come to the altar with their lighted candles and hold them up to form a circle of light over the list of names.

They hold candles up for a moment then lower them simultaneously and set them on the altar leaving them there.

(You may decorate your Past Officers with a ribbon, badge, or flower, when they enter the chapter room to go to seats which you have reserved for them.)

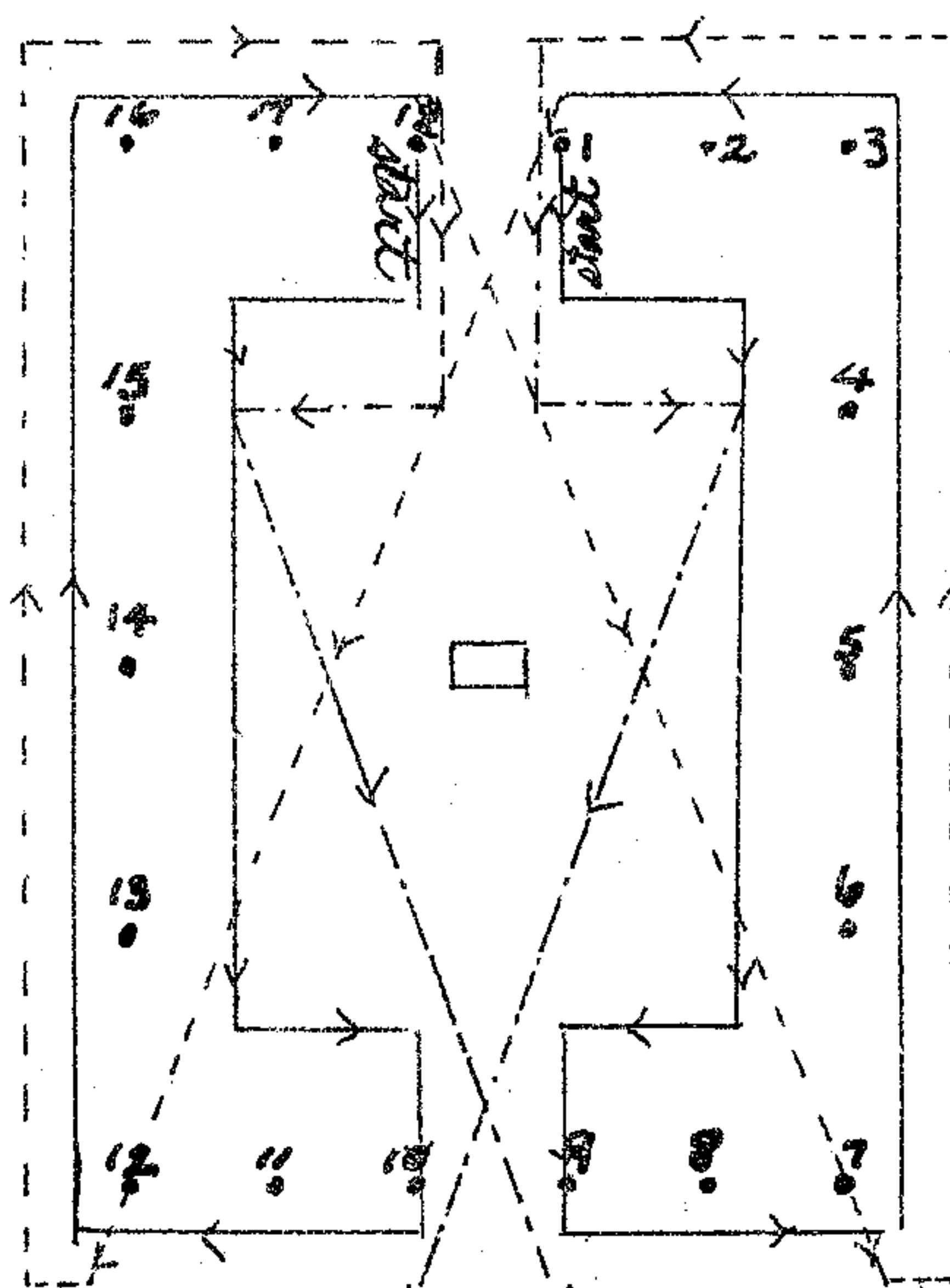
The Officers will form a Fence of Love, in this formation. They will leave in the following drill, the first line of march being marked with the solid line, thus: —; the second being marked with the dotted line, thus: - - - -; the third with the line and dash, thus: - - - -.

NOTE: The Worthy Matron and Worthy Patron take their places in Love's Fence as soon as they finish speaking.

(If the use of candles is prohibited in your state, flash lights may be used quite effectively. The colored lights may be electric lights in holders, with extension cords which will permit them to be carried to the altar.)

The End

1. Conductress
2. Worthy Patron
3. Adah
4. Marshal
5. Secretary
6. Ruth
7. Asso. Matron
8. New Member
9. Warder
10. Esther
11. Old Member
12. Asso. Patron
13. Martha
14. Treasurer
15. Chaplain
16. Electa
17. Worthy Matron
18. Asso. Conductress



Out of room - or to seats
in room.
— 1st time around.
- - - 2nd time around
- - - 3rd time around