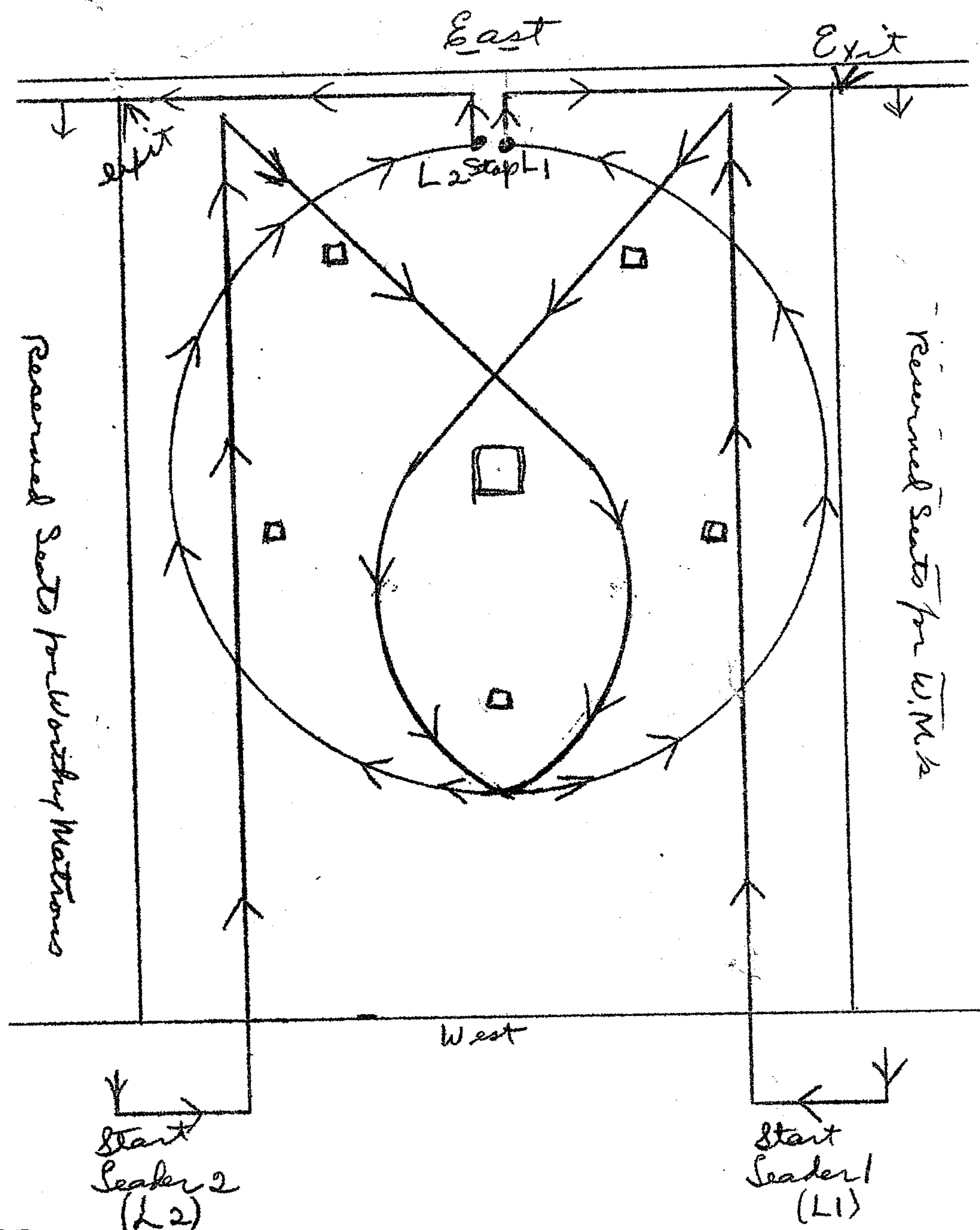


# Golden Chain March Worthy Matrons

Diagram 1  
(one only)



## GOLDEN CHAIN MARCH

Worthy Matrons wear long white formals and carry golden links. Worthy Matrons are seated in reserved seats on north and south sidelines before program opens.

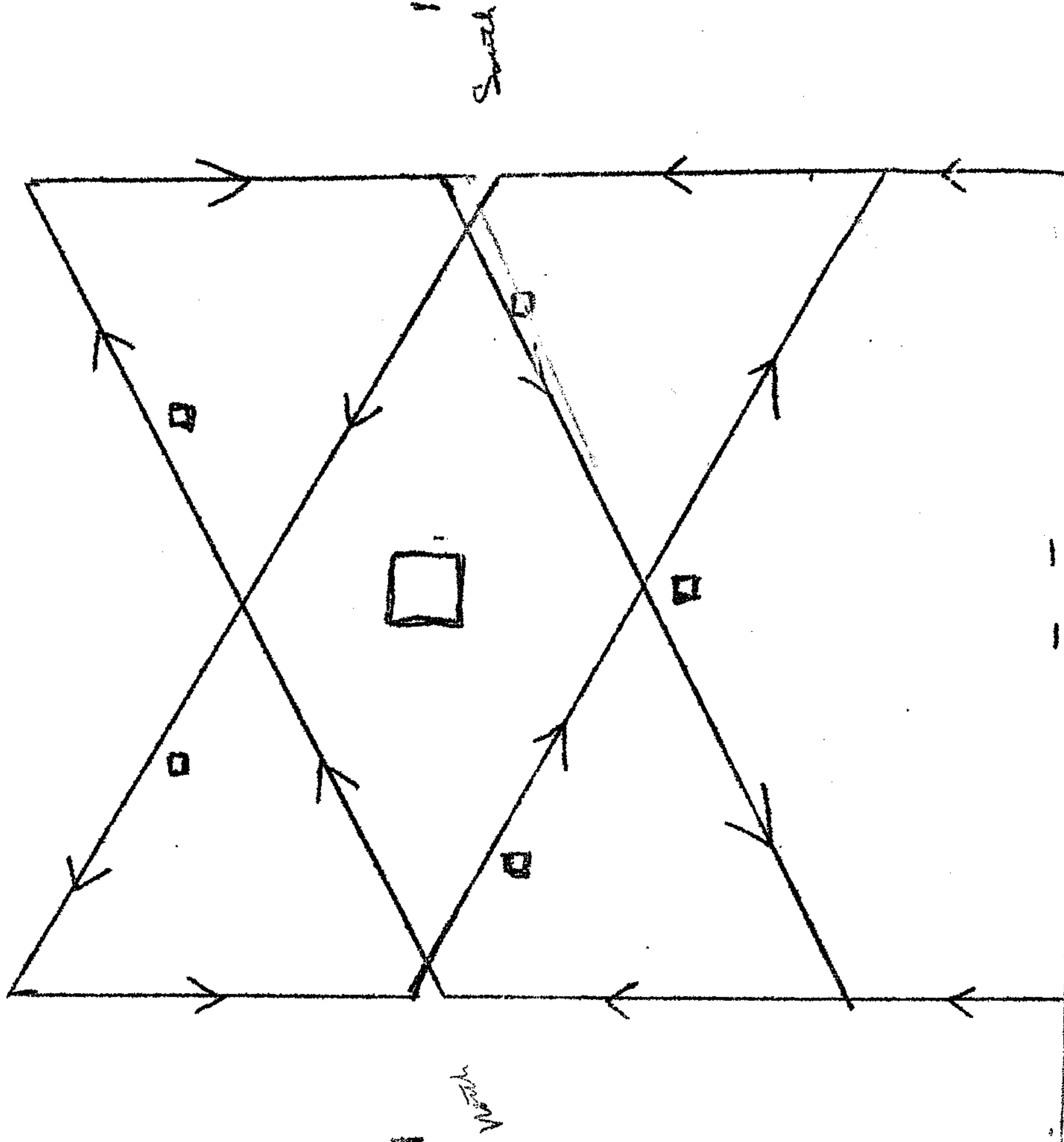
Two lines enter from west, proceed to East, turn, march diagonally toward altar, cross East of altar, inside labyrinth. Proceed to point west of Esther's station, and cross again. Proceed toward East outside labyrinth. When Leaders arrive at point east of altar, outside of labyrinth, they stop. All worthy matrons should be forming a large circle. All turn and face altar. Hold golden links above head, hands touching neighbor's hands, forming a huge golden chain. Choir sings "Blest Be The Tie".

Then lower golden links turn to marching position, and at east ends of sidelines returning to seats.

Grand Boy March

Diagram 1  
District Deputies, Pages, Ushers, Rainbow  
& De Molays

East



Start D.D.2

(North) Line 2  
10 District Deputies

Page  
Usher  
Page  
Usher  
Page  
Usher  
Page  
Usher  
Page

West

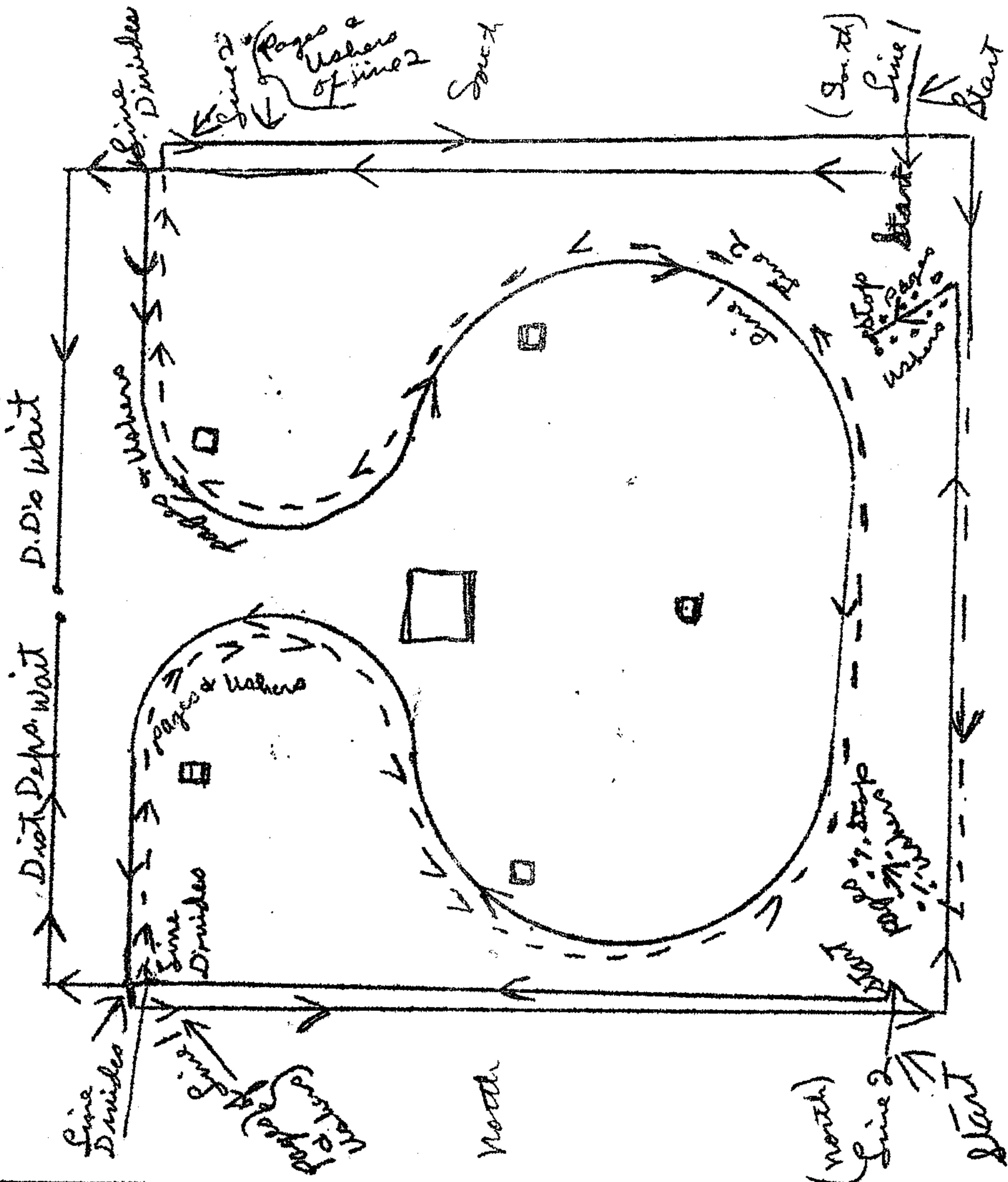
Start D.D.1  
(South) Line 1  
10 or 11 District Deputies

Page  
Usher  
Page  
Usher  
Page  
Usher  
Page  
Usher  
Page

Grand Boy March

Diagram 2  
District Deputies, Pages, Ushers, Rainbow  
& De Molays  
Feb 24

East



West

Broken line indicates (North) Line 2 for  
Pages & Ushers

(District Deputies are still leading at  
beginning of this diagram.)





JEWEL BOX MARCH - District Deputies, Pages, Ushers  
Rainbow, and DeMolays.

Before this march opens, the Presiding Officers will announce: "In the Jewel Box March we shall see "The Jewel Box - Filled with Life's Treasures - Our Children and Our Youth". The District Deputies will form a jewel box, and the Rainbow Girls and DeMolay Boys will represent our children and our youth."

Line 1, or South Marching Line, consists of 10 or 11 District Deputies, followed by 5 Pages and 5 Ushers alternating, beginning with a Page.

Line 2, or North Marching Line, is similar.

In Diagram 2, lines divide as they reach point indicated. District Deputies wait in a line across the East. Pages and Ushers follow "horseshoe-like" pattern in pairs. Pages and Ushers form couples - Pages march nearest altar. In South line usher offers right arm. In north line usher offers left arm. They form two courts, one in southeast, and one in northwest, for Rainbows and DeMolays to enter.

In Diagram 3 - District Deputies march west in two lines toward altar, divide, and form jewel box around altar. Rainbows and DeMolays enter carrying flags of their respective organizations. As they proceed toward altar through courts of Pages and Ushers, the leading couple of each court falls in ahead of DeMolays and Rainbows, to lead them, or as an escort. They take them into jewel box and step back so that flags may be directly west of altar. Rainbows and DeMolays are escorted east by leading Pages and Ushers. They parade flags back, and exit through courts of Pages and Ushers.

Pages and Ushers will exit, followed by District Deputies. All exit in simplest, most direct route. They go to reserved chairs on north and south sidelines.



Grand Officers and Pages

Grand Officers and Pages

Grand Officers and Pages

A. Cond.  
Measure  
Chaplain  
Master  
Cather  
Organist  
A. B. Motion  
W. B. Motion

A. Cond.  
Start

Cond.  
Start

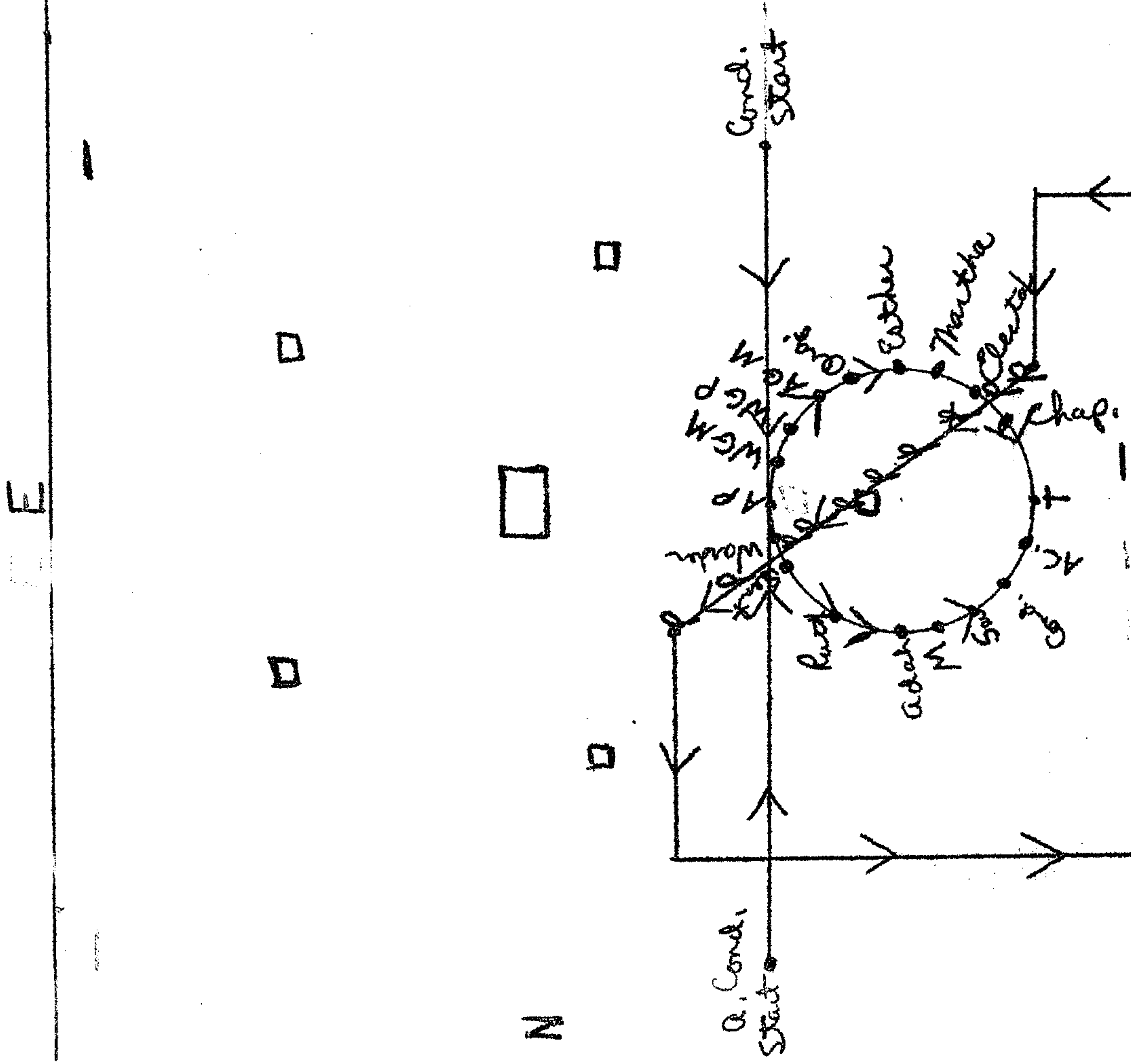
Cond.  
Secretary  
Marshal  
Adele  
Ruth  
Sentinel  
Wander  
A. B. Motion  
W. B. Motion

Cond.  
Start

O. E. S. GRAND  
CHAPTER LIBRARY

diag.

diag.

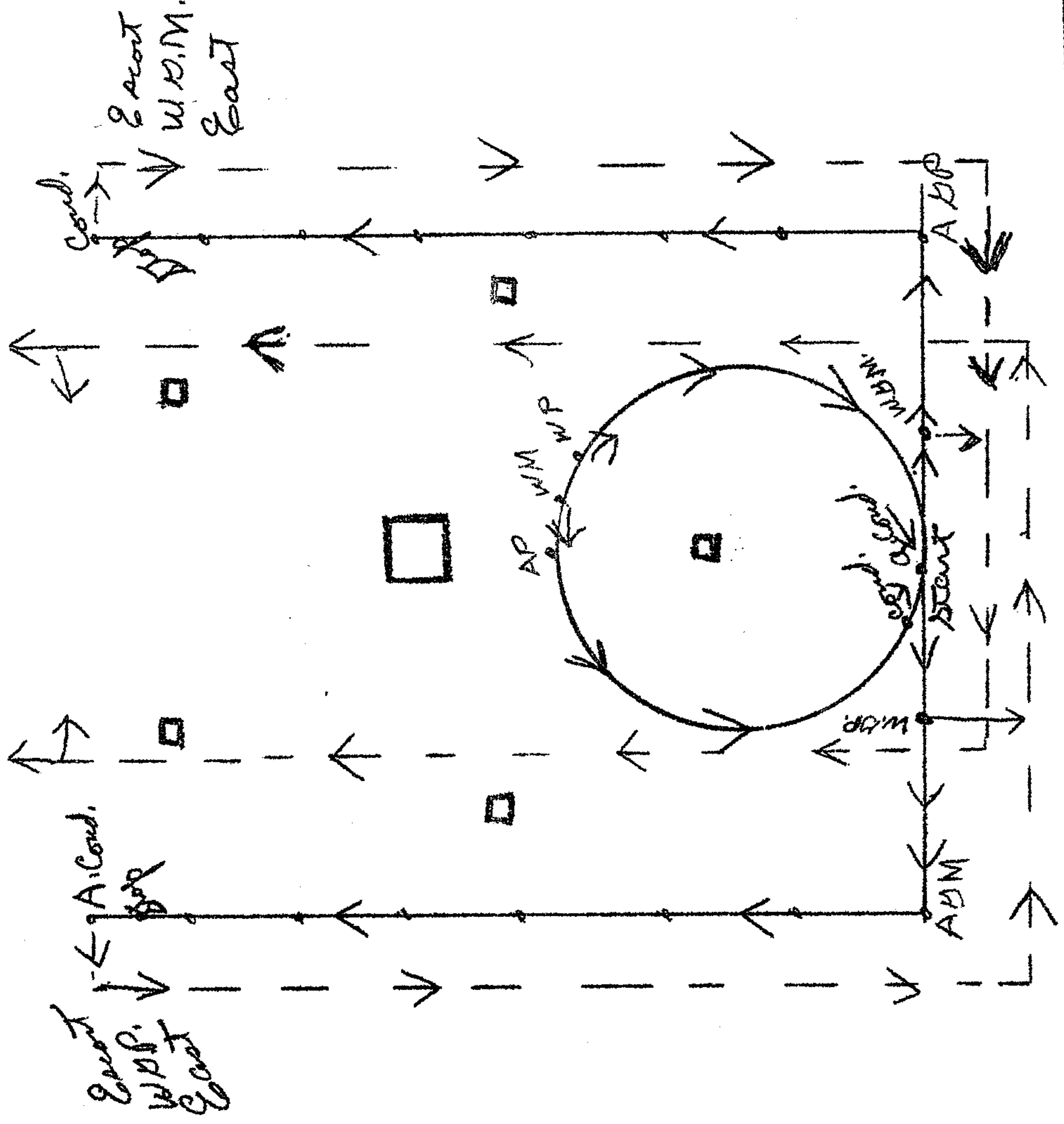


Enter Pages After  
Circle is formed.

Conductresses lead lines toward Center  
and form Circle (Crown).  
Officers & pages maintain position for  
a few minutes (special music, etc.)

Day. 4

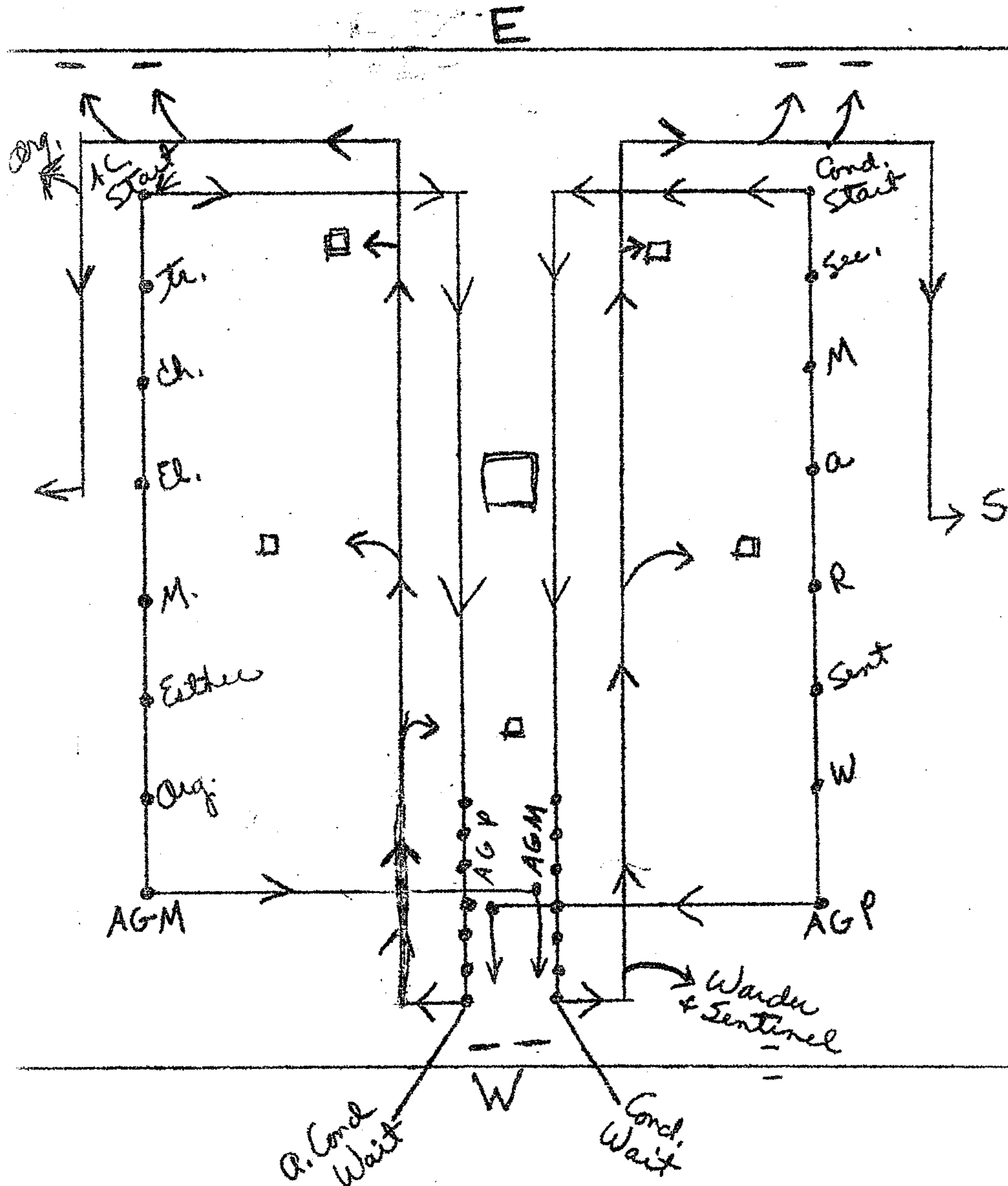
1  
1



(Start from West side of circle.)  
Hollow square is formed.  
Broken lines indicate W.V.M.  
& W.V.P. being escorted East.

own & Acepter March  
Grand Officers

Diagram 5



Officers form Court for A. G. M. & A. G. P., then  
Take their stations, Conductresses, A. G. M. & A. G. P.  
start toward Center simultaneously, other officers  
follow Conductresses.



CROWN AND SCEPTER MARCH - Grand Officers and Pages

Diagram 3: Conductresses lead their lines to center, to a point between Altar and Esther's station. They cross, and form a circle around Esther's chair, making sure that chair is not exactly in center. (This is so Scepter(Pages) may clear it). Conductresses meet at a point north of center at back, so that AGPatron arrives in center at front of circle. The WGP stops to AGP's south, and Sentinel to the north. Thus, the "Crown" is higher in front.

Officers in Crown formation face out and clasp hands.

Then pages enter according to diagram, forming Scepter, facing North east. Four pages stop outside circle, two at each end of Scepter. Six inside. Each page puts right hand on shoulder of page ahead.

While position of officers is maintained, the Presiding Officer reads: "To wear a crown of exaltation with becomingness and to carry a scepter of personal sacrifice with grace, are virtues worthy of emulation."

Pages exit on North marching line.

Diagram 4: Hollow square is formed, and WGM and WGP are escorted East. Cond. and A. Cond. start from West side of "Crown", cross lines, and lead lines so that Hollow square is formed.

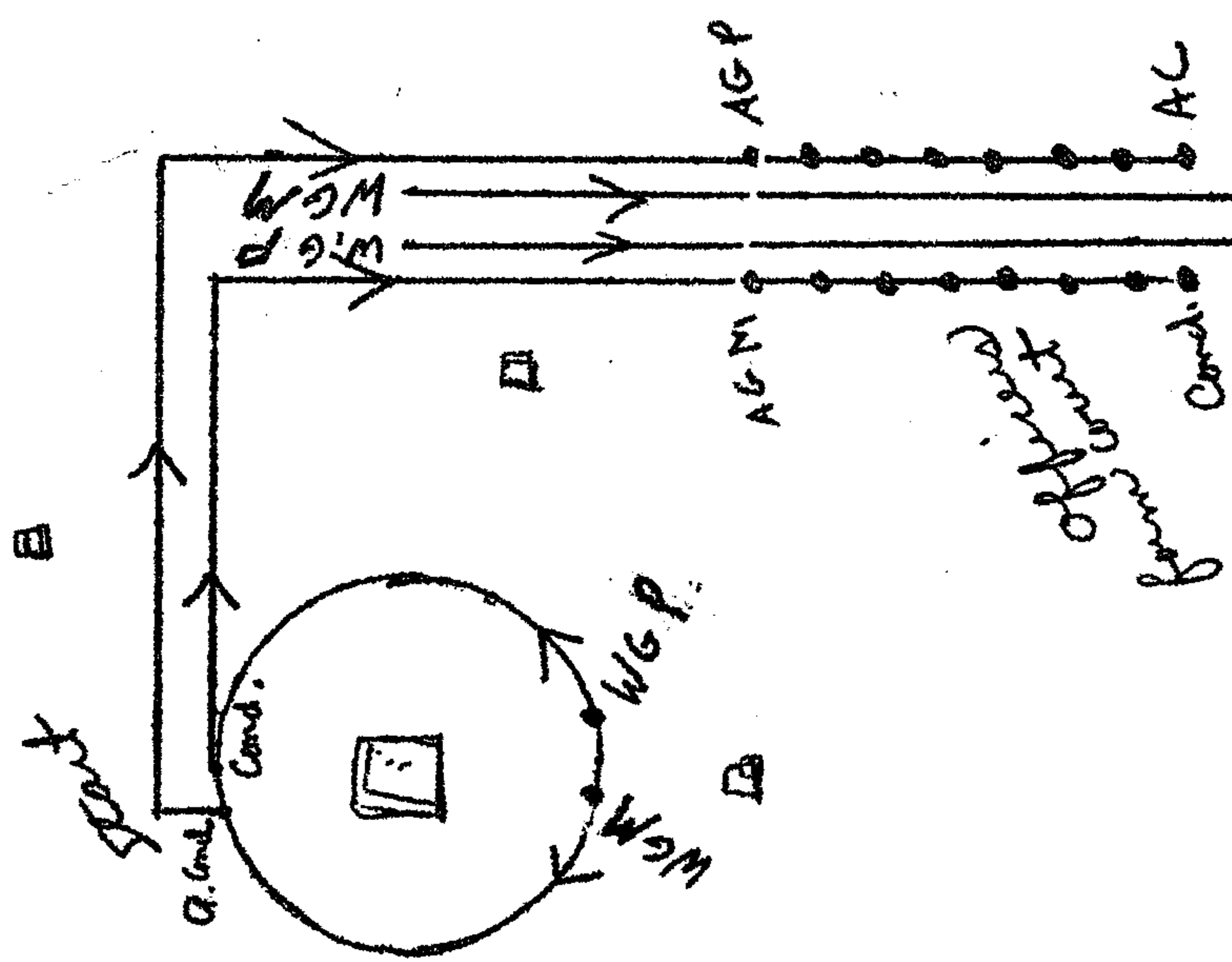
Diagram 5: Officers take stations. AGM and AGP start moving toward center simultaneously with start of conductresses. Officers form court in west ~~of~~ for AGM and AGP. Then lines proceed east as shown, and officers take places.



Diag. 4

Closing March  
Grand Officers

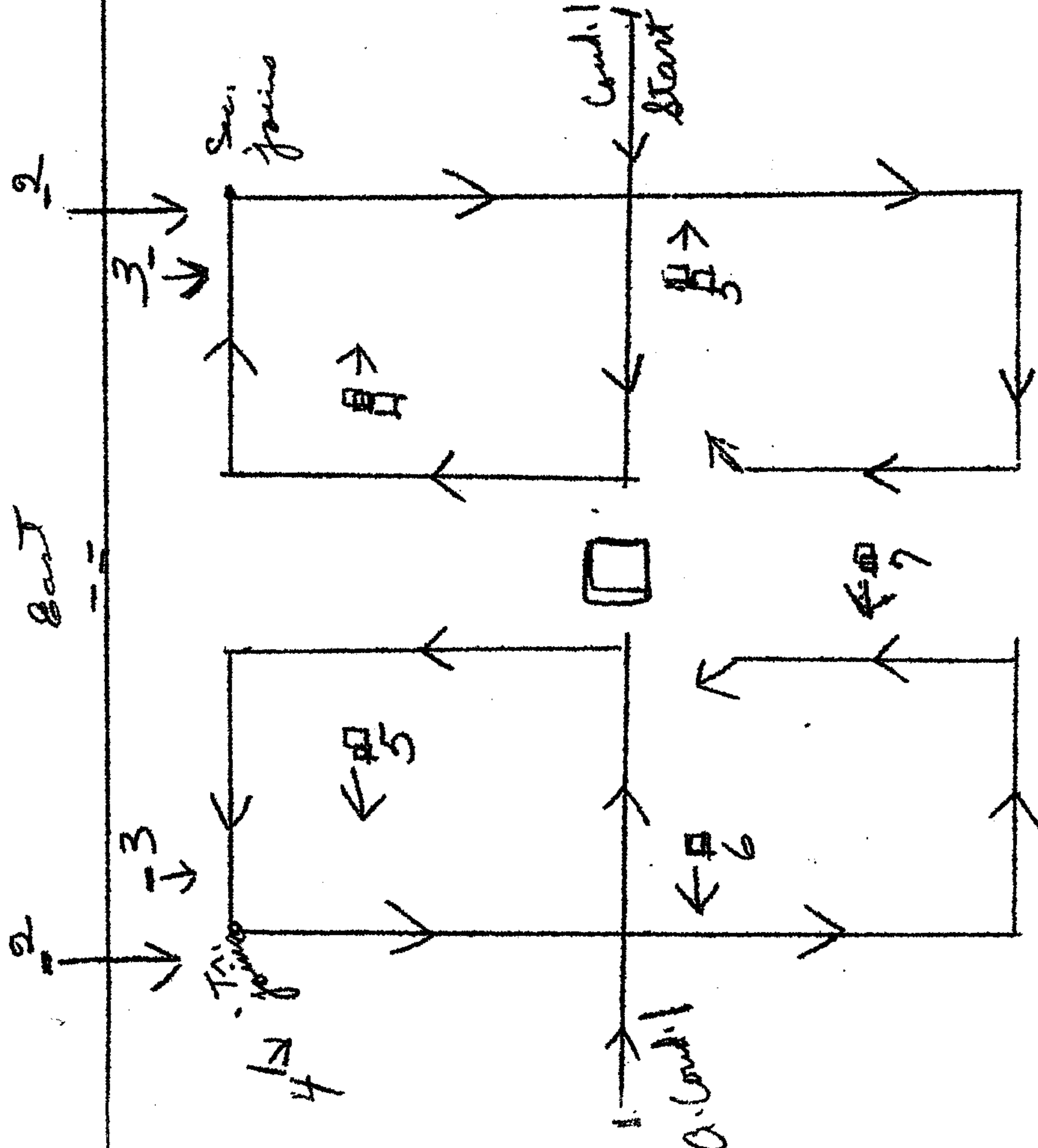
E



Officers form count as W.G.M. and W.G.P. exit. Next, A.G.M. and A.G.P. exit, and all officers exit in turn.

Closing March  
Grand Officers

Diagram 1



E 6

E 7

Line 2  
A. Cond. 1  
Treas. 2  
Chaplain 3  
Organist 4  
Singer 5  
March 6  
Sentinel 7  
A. Cond. 8

Line 1  
Cond. 1  
Sec. 2  
March 3  
Adapt 4  
Ruth 5  
Ward 6  
Sentinel 7  
A. Cond. 8

CLOSING MARCH - Grand Officers

## Line 1 (On south)

Conductress 1

Secretary 2

Marshal 3

Adah 4

Ruth 5

Warder 6

Sentinel 7

AGM 8

## Line 2 (On north)

Associate Conductress 1

Treasurer 2

Chaplin 3

Organist 4

Electa 5

Martha 6

Esther 7

AGP 8

Diagram 1: Conductresses march toward altar, then east, and go South and North, Cond. and A. Cond. respectively. As they turn west, Secretary and Treasurer fall in line, and others fall in line according to number. It is important to have AGM and AGP at ends of lines.

Diagram 2: Officers form court east of altar (diagonal lines) as AGM and AGP march west.

Diagram 3: AGM and AGP lead as officers march toward altar, and form circle around altar. Officers maintain this position as they repeat Benediction: "Dear God, keep us and guide us, and go with us each day."

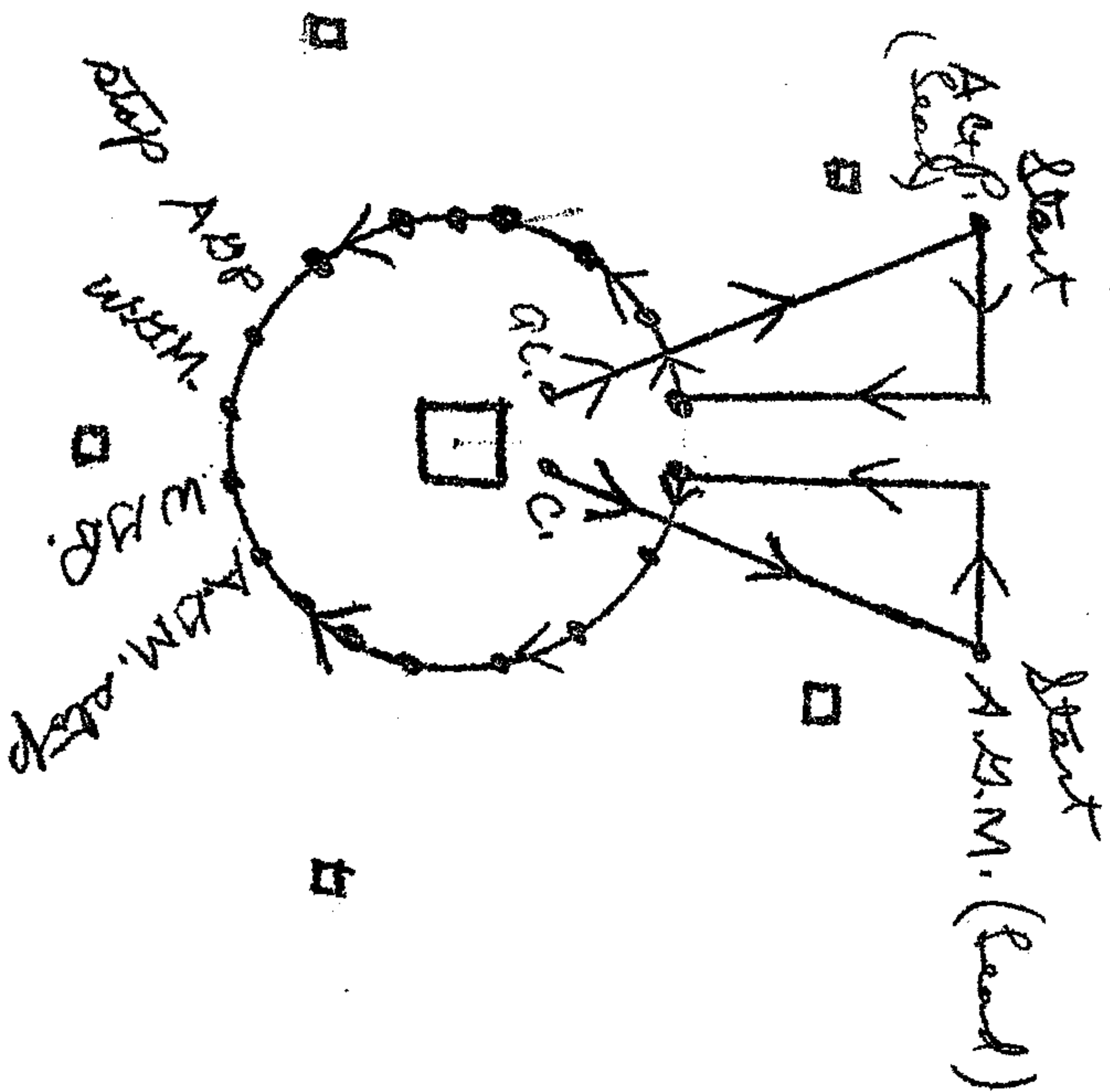
Diagram 4: Conductresses lead officers in two lines toward South marching line. They march west, form court, and AGM and AGP march through and exit. AGM and AGP follow next, and then all officers exit in turn.



Closing March  
Herald Officers

Diagram 3

East



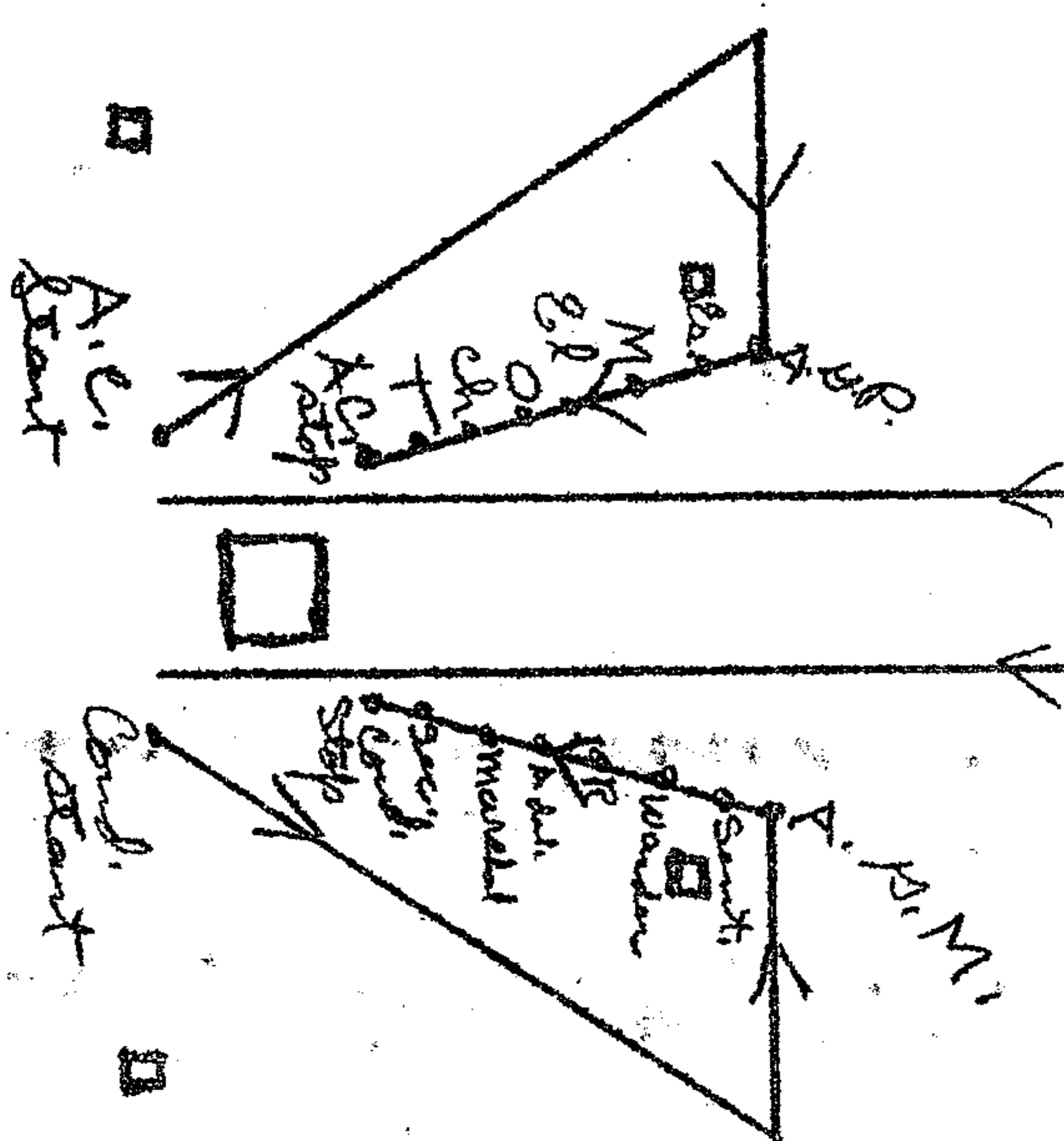
A.M.M. & A.M.M. Lead,  
Officers form circle around altar.

Conductors stop in position  
East of altar, as circle is formed.

Closing March  
Herald Officers

Diagram 2

East  
W.B.M. W.B.P.



Officers form court. W.B.M. &  
W.B.P. March west past altar.